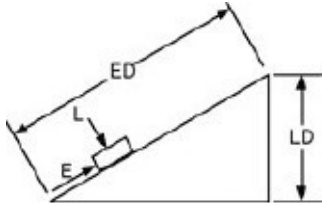


1.



The effort required to push the load(L) up the ramp when  $ED = 14$  feet,  $LD = 5$  feet and  $L = 300$  pounds is \_\_\_\_\_ pounds.

(A) 607

(B) 207

(C) 403

(D) 107

2. Add the following decimals and express the answer to three decimal places.

$$0.4789 + 3.125 + 9.656$$

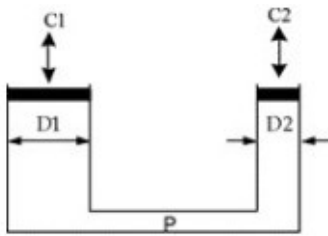
(A) 13.26

(B) 13.3

(C) 13.259

(D) 13.2599

3.



When the downward force at C2 is 100 lb and  $D2 = 2.5$  inches, the upward force at C1 will be \_\_\_\_\_ lb if  $D1 = 4$  inches.

(A) 160

(B) 256

(C) 384

(D) 240

4. What are common materials used as electrical conductors?

(A) Silver, copper, aluminum

(B) Copper, glass, lead

(C) Mica, rubber, titanium

(D) Gold, copper, mica

## Industrial Mechanic Millwright

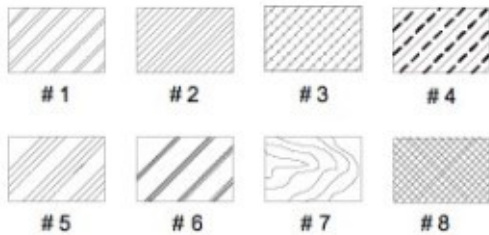
---

5. Large impulse turbines will use what of rotor?
- (A) Build-up rotors                       (B) Solid rotors.
- (C) Combination of solid and build-up rotors.                       (D) All
6. The most effect purging medium to use when dealing with iron sulphide is:
- (A) air                       (B) carbon dioxide.
- (C) nitrogen                       (D) water
7. The shape of a ball bearing is \_\_\_\_\_ when a load is applied to the ball.
- (A) elliptical                       (B) circular
- (C) rectangle                       (D) radial
8. Which of the following is a typical 4000 hour inspection duty with compressors?
- (A) Service the crankcase breather                       (B) Take oil samples
- (C) Recalibrate all temperature and pressure gauges                       (D) Check gas discharge and inlet temperatures
9. What does the term nominal filter refer to?
- (A) A ratio of large to small particles found in a test run.                       (B) The largest particle that will pass through the filter under specific test conditions.
- (C) The length of time a filter is functional based on particle tests.                       (D) That a stated percentage of a certain size particle will be stopped.
10. Which of the following best defines a breaker fabric?
- (A) An open mesh used to reinforce against longitudinal breaking under impact                       (B) A single layer of fabric that provides load support
- (C) The traverse yarns that run perpendicular to the warp yarns                       (D) Yarns in the fabric that provide the tension strength

## Industrial Mechanic Millwright

---

1090.



Referring to the figure, which of the following is a material section drawing for Bronze?

- |                             |  |
|-----------------------------|--|
| <input type="radio"/> (A) 1 | <input type="radio"/> (B) 2            |
| <input type="radio"/> (C) 3 | <input checked="" type="radio"/> (D) 4 |
| <input type="radio"/> (E) 5 | <input type="radio"/> (F) 6            |
| <input type="radio"/> (G) 7 | <input type="radio"/> (H) 8            |

1091. On a master precision level each division is sensitive to within \_\_\_\_\_ inch per foot on its main horizontal vial.

- |   |                                |
|---|--------------------------------|
| <input checked="" type="radio"/> (A) 0.0005 | <input type="radio"/> (B) 0.05 |
| <input type="radio"/> (C) 0.005             | <input type="radio"/> (D) 0.5  |

1092. Which abbreviation stands for "cold rolled mild steel"?

- |                                |   |
|--------------------------------|---|
| <input type="radio"/> (A) MSCR | <input checked="" type="radio"/> (B) CRMS |
| <input type="radio"/> (C) RMSC | <input type="radio"/> (D) MSC             |

1093. In a refrigeration system the piping that connects the condenser to the receiver is called the:

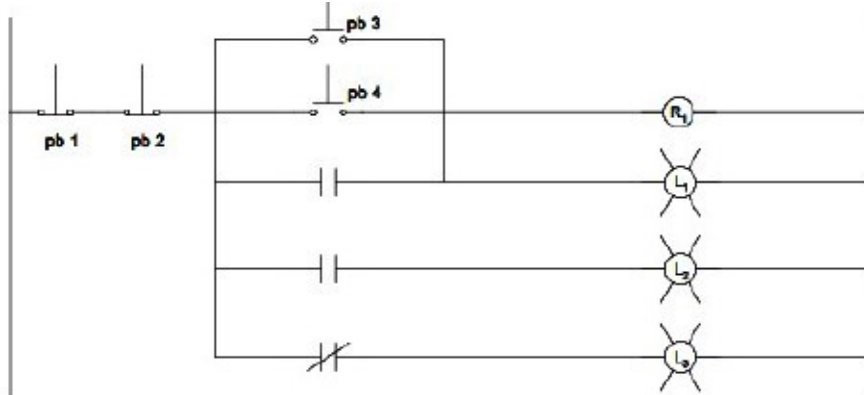
- |  |   |
|--|---|
| <input checked="" type="radio"/> (A) condensate drain line | <input type="radio"/> (B) suction line    |
| <input type="radio"/> (C) liquid line                      | <input type="radio"/> (D) discharge line. |

1094. When using the Explosive Actuated Tool process on steel a general recommendation is to drive the fasteners no closer than \_\_\_\_ mm from another fastener

- |   |                              |
|---|------------------------------|
| <input type="radio"/> (A) 15            | <input type="radio"/> (B) 40 |
| <input checked="" type="radio"/> (C) 50 | <input type="radio"/> (D) 10 |

## Industrial Mechanic Millwright

1095.



What loads are energized when pushbuttons # 4 is activated?

- A lamp #1, lamp #2, R1
- B lamp #2, lamp #3
- C lamp #1, lamp #2,
- D lamp #2, lamp #3, R1

1096. The oil pressure in an engine is affected by:

- A the volume of the oil pump.
- B the viscosity of the oil.
- C all
- D the amount of bearing clearance.

1097. Who is responsible for locking out a piece of electric equipment in a plant?

- A The millwright is
- B The electrician is.
- C Everyone that is going to work on that piece of equipment.
- D The first person to work on a specific piece of equipment.

1098. It is not uncommon for a compressor valve to have \_\_\_\_\_ cycles in a year.

- A one billion
- B 500 million
- C 12 million
- D 800,000

1099. On a small impulse steam turbine the nozzle ring is located and bolted in place:

- A near the exhaust outlet
- B next to the second rotor
- C at the reversing chamber.
- D at the steam chest side.

## Industrial Mechanic Millwright

---

1100. The air we breathe is comprised of \_\_\_\_% oxygen.

A 62

B 21

C 47

D 12